



Cyngor Celfyddydau Cymru
Arts Council of Wales



Arts Portfolio Wales Survey Highlights 2016/17



Noddir gan
Lywodraeth Cymru
Sponsored by
Welsh Government

National Youth Dance Wales
(image: Kirsten McTernan)

The Arts Council of Wales provides core revenue grant funding to 67 arts organisations, known as Arts Portfolio Wales organisations.

A full list of the Arts Portfolio Wales organisations (APWs) is included in Appendix A. They include music, drama and dance companies, arts centres and theatres, galleries and community arts organisations.

Completion of the survey is a condition of grant and APWs are required to submit data online twice a year; in November (reporting on April to September activity) and June (October to March activity). The survey primarily collects data on the number of arts events produced and presented and the public engagement with these activities.

This report gives an overview of the activity returns from APWs for the financial year 2016/17 and, where possible, comparisons have been made to data from the previous financial year.

For more detailed reports on each of the survey sections refer to the following:

[Performing and Touring Companies Arts Portfolio Wales Survey 2016/17](#)

[Exhibitions Arts Portfolio Wales Survey 2016/17](#)

[Film Arts Portfolio Wales Survey 2016/17](#)

[Live Performances at Venues Arts Portfolio Wales Survey 2016/17](#)

[Participatory Activity for Children and Young People Arts Portfolio Wales Survey 2016/17](#)

[Participatory Activity Arts Portfolio Wales Survey 2016/17](#)

[Broadcasts and Streaming Arts Portfolio Wales Survey 2016/17](#)

[Employment Data and Boards of Management/Advisory Committees Arts Portfolio Wales Survey 2016/17](#)

[Services to the Arts Sector Arts Portfolio Wales Survey 2016/17](#)

These reports are available at:

<http://www.arts.wales/research/annual-surveys/survey-of-arts-portfolio-wales/apw-survey-reports>

Arts Portfolio Wales delivered a total of

24,014

arts events during 2016/17.

These generated attendances of

4.2 million

in 2016/17.

Arts Portfolio Wales also ran

64,058

participatory arts sessions, resulting in over

1.1 million

attendances.

Arts Portfolio Wales employed a total of

5,222

paid staff and volunteers during 2016/17 and offered

6,512

training sessions to individual artists and arts organisations.

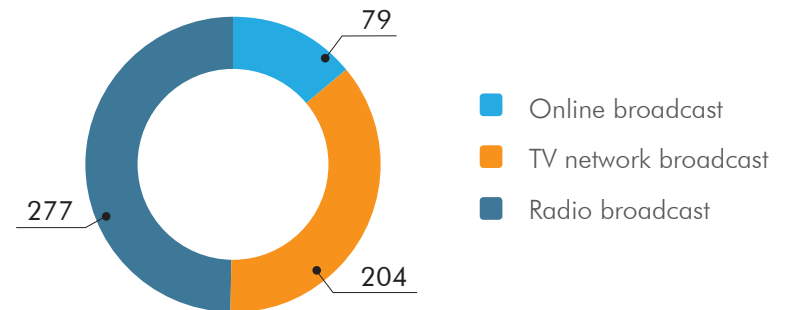
There were

560

broadcasts of APWs' work in 2016/17 and the number of visits to APW websites rose to over

7.3 million

Broadcasts made by Arts Portfolio Wales organisations during 2016/17



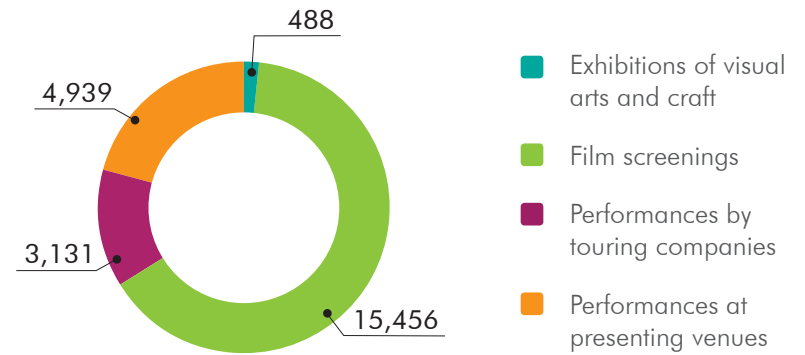
Events

The number of events delivered by APW organisations increased by

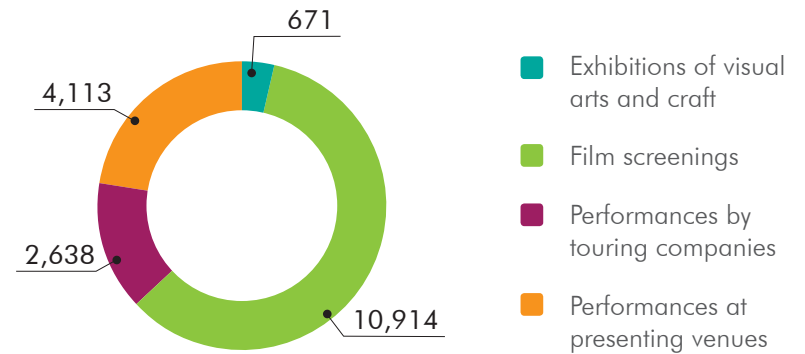
31%
from
18,336
the previous year.



Events delivered during 2016/17



Events delivered during 2015/16



I Am Not a Witch – Welsh-Zambian writer-director Rungano Nyoni's debut feature. Early support from Ffilm Cymru Wales

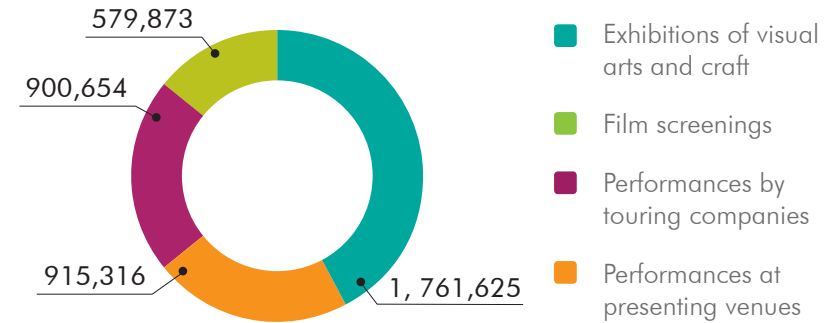
Attendances

Attendances to events have increased by

11.1%
from
3.7 million
in 2015/16 to
4.2 million
in 2016/17.



The highest levels of attendances were made to exhibitions of visual arts and crafts, which received 1,761,625 attendances. Performances at presenting venues attracted 915,316 attendances. 900,654 attendances were made to performances by touring companies and 579,873 attendances were made to film screenings.



	Events			Attendances		
	2015/16	2016/17	% Change	2015/16	2016/17	% Change
Totals	18,336	24,014	31.0	3,740,833	4,157,468	11.1
Exhibitions	671	488	-27.3	1,714,448	1,761,625	2.8
Film Screenings	10,914	15,456	41.6	423,745	579,873	36.8
Performances by Touring Companies	2,638	3,131	18.7	691,997	900,654	30.2
Performances at Presenting Venues	4,113	4,939	20.1	910,643	915,316	0.5

Base = 68 organisations in 2015/16 and 67 organisations in 2016/17

Participation

In total there were
26,105
 sessions run as general participatory activity,
 not targeted at children and young people. These
 general participatory arts sessions generated
469,707
 attendances.



There has been a -10.4% decrease in the number of participatory sessions put on since 2015/16. Attendances to participatory sessions have also decreased by -6%.



There were
37,953
 participatory sessions targeted at children and young
 people and these participatory sessions resulted in
633,729
 attendances.

Compared to the previous year, the number of participatory sessions has decreased by -10.6% from 42,445 and the number of attendances to these sessions by -0.6%.

	Sessions			Attendances		
	2015/16	2016/17	% Change	2015/16	2016/17	% Change
Totals	71,588	64,058	-10.5	1,137,385	1,103,436	-3.0
Children and Young People	42,445	37,953	-10.6	637,821	633,729	-0.6
General Participatory Activity	29,143	26,105	-10.4	499,564	469,707	-6.0

Base = 68 organisations in 2015/16 and 67 organisations in 2016/17

Families

12.5%

(3,005) of all events run by Arts Portfolio Wales organisations were targeted at families and attendance to these events accounted for

12.3%

(513,140) of all attendances at events.



Participatory sessions targeted specifically at families made up

4.7%

(3,002) of all participatory sessions and

7%

(78,187) of all attendances at participatory sessions.

34.5%

of targeted broadcasts were targeted at families,

57

in total.

Welsh Language



Of all the events run by Arts Portfolio Wales organisations,

1,062

were run through the medium of Welsh in 2016/17, which is the equivalent of

4.4%

of all events.

100,575

attendances were made to these events, representing 2.4% of all attendances at events.

In terms of participatory activity,

15.6%

of all sessions (9,973) were run in Welsh.

These sessions received

191,620

attendances in total, which is 17.4% of all attendances at participatory sessions.

	Events			Attendances at events		
	2015/16	2016/17	% Change	2015/16	2016/17	% Change
Exhibitions	3	11	266.7	4,260	87,629	1957
Film Screenings	713	1,827	156.2	44,237	103,138	133.1
Performances by Touring Companies	446	657	47.3	125,962	217,880	73
Performances at Presenting Venues	338	510	50.9	84,625	104,493	23.5
Total Events Targeted at Families	1,500	3,005	100.3	259,084	513,140	98.1

Base = 68 organisations in 2015/16 and 67 organisations in 2016/17

	Sessions			Attendances		
	2015/16	2016/17	% Change	2015/16	2016/17	% Change
Participatory Sessions Targeted at Families	1,332	3,002	127.1	66,048	78,187	18.4

Base = 68 organisations in 2015/16 and 67 organisations in 2016/17

	2015/16	2016/17	% Change
Broadcasts targeted at families	34	57	67.6

Base = 2 organisations 2015/16 and 5 organisations in 2016/17

	Welsh Language Events			Attendances		
	2015/16	2016/17	% Change	2015/16	2016/17	% Change
Totals	995	1,062	6.7	128,312	100,575	-21.6
Film Screenings	38	232	510.5	1,641	6,251	280.9
Performances by Touring Companies	482	360	-25.3	53,809	40,613	-24.5
Performances at Presenting Venues	475	470	-1.1	72,862	53,711	-26.3

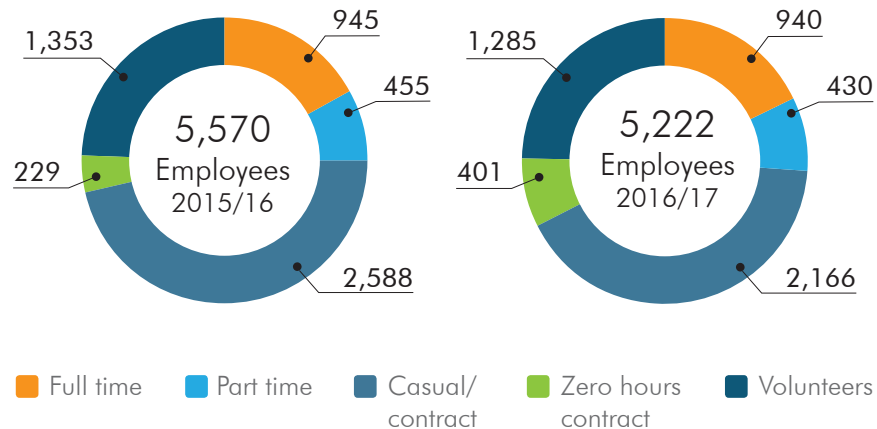
Base = 68 organisations in 2015/16 and 67 organisations in 2016/17

	Welsh Language Sessions			Attendances		
	2015/16	2016/17	% Change	2015/16	2016/17	% Change
Totals	7,689	9,973	29.7	152,433	191,620	25.7
Children and Young People	3,398	3,857	13.5	97,991	137,911	40.7
General Participatory Activity	4,291	6,116	42.5	54,442	53,709	-1.3

Base = 68 organisations in 2015/16 and 67 organisations in 2016/17

Training and Employment

Number of employees including volunteers



The total number of employed staff (paid and volunteers) has decreased by -6.2%. Of those employed, 3,937 were in paid employment, a decrease of -6.6% from the 4,217 that were in paid employment in 2015/16. Volunteers account for almost a quarter (24.6%) of the workforce.

Of those employed within these organisations,

37
were trainees.

55%
(2,166) of those in paid employment were on a casual contract,
940
(24%) were employed full time and
430
(10.9%) were employed part-time. A further
401
employees were reported to be on zero hour contracts.

The total number of training sessions run by Arts Portfolio Wales for individual artists or arts organisations decreased by

-11.7%
from 2015/16 to
6,512
sessions in 2016/17.

On the other hand, attendances have increased by 0.8%. Average attendance per session has increased from 2 to 2.2. These figures also include one to one mentoring or work placement sessions.

	2015/16	2016/17	% Change
Total number of Full time Employees	945	940	-0.5
Total number of Part time Employees	455	430	-5.5
Total number of casual/contract employees	2,588	2,166	-16.3
Total number of zero hours contract employees	229	401	75.1
Total number of volunteers	1,353	1,285	-5.0
Total number of Employees (Including volunteers)	5,570	5,222	-6.2

Base = 68 organisations in 2015/16 and 67 organisations in 2016/17

	2015/16	2016/17	% Change
Total number of Male Trainees	17	22	29.4
Total number of Female Trainees	28	15	-46.4
Total number of Trainees	45	37	-17.8

Base = 28 organisations in 2015/16 and 22 organisations in 2016/17

	Sessions			Attendances		
	2015/16	2016/17	% Change	2015/16	2016/17	% Change
Total number of training sessions run by APWs for artists and arts organisations	7,372	6,512	-11.7	14,488	14,599	0.8
English	5,140	5,840	13.6	10,449	11,362	8.7
Welsh	2048	480*	-76.6	2,735	2,288	-16.3
Bilingual	120	91	-24.2	469	613	30.7
Other	14	17	21.4	413	55	-86.7
LNR	50	84	68.0	422	281	-33.4

*The majority of this decrease is due to one organisation's activity
Base= 42 organisations 2015/16 and 44 organisations in 2016/17

Boards of Management/Advisory Committees

There were
696
members sitting on boards of management.
More men (399); than women
(297) were board members.

Board of Management	2015/16	2016/17	% Change
Total number of men on boards of management	429	399	-7.0
Total number of women on boards of management	299	297	-0.7
Total number of members of board of management	728	696	-4.4

Base= 64 organisations in 2015/16 and 62 organisations in 2016/17



Rubicon Dance (image: Sian Trenberth Photography)

Protected Characteristics

18.3%

of events run by APWs were targeted at those in the protected characteristics groups and attendances at these events made up over a tenth

12.5%

of all attendances.

Of all the participatory activity,

11.8%

(7,543) of sessions were targeted at those in protected characteristics groups and

12.4%

(137,131) of all attendances were made to these activities.



Cabaret of Blood, Unity Festival 2016, Hijinx (image: Jonathan Dunn)

	Events Targeted at Protected Characteristic Groups			Attendances		
	2015/16	2016/17	% Change	2015/16	2016/17	% Change
Exhibitions	185	54	-70.8	55,167	*228,011	313.3
Film Screenings	2,477	3,181	28.4	87,220	133,608	53.2
Performances by Touring Companies	618	668	8.1	81,475	83,744	2.8
Performances at Presenting Venues	619	493	-20.4	80,966	75,771	-6.4
Total Targeted	3,899	4,396	12.7	304,828	521,134	71

*Part of the reported increase in attendances to exhibitions targeted at people in the protected characteristics group is due to two organisations.

Base = 42 organisations 2015/16 and 44 organisations in 2016/17

	Sessions Targeted at Protected Characteristic Groups			Attendances		
	2015/16	2016/17	% Change	2015/16	2016/17	% Change
Totals	13,443	7,543	-5	144,354	137,131	-5
Children and Young People	4,290	2,620	-9.4	43,972	39,840	-9.4
General Participatory Activity	9,153	4,923	-3.1	100,382	97,291	-3.1

Base = 68 organisations in 2015/16 and 67 organisations in 2016/17

Appendix A

Arts Portfolio Wales organisations 2016/17

Aberystwyth Arts Centre	Literature Wales	The Welfare Ystradgynlais
Arad Goch	Live Music Now Wales	Theatr Bara Caws
Artes Mundi Prize Limited	Llantarnam Grange Arts Centre	Theatr Brycheiniog
Artis Community Cymuned	Mid Wales Opera	Theatr Felinfach
Arts Care Gofal Celf	Mission Gallery	Theatr Genedlaethol Cymru
Arts Connection - Cyswllt Celf	Mostyn	Theatr Iolo
Ballet Cymru	Music Theatre Wales	Theatr Mwldan
BBC National Orchestra of Wales	National Dance Company Wales	Theatr na n'Óg
Blackwood Miners' Institute	National Theatre Wales	Torch Theatre Company Limited
Canolfan Gerdd William Mathias Cyf	National Youth Arts Wales	trac - Music Traditions Wales
Chapter Cardiff Ltd	NEW Dance	Tŷ Cerdd - Music Centre Wales
Clwyd Theatr Cymru	NoFit State Community Circus Ltd	Canolfan Ucheldre Centre
Community Music Wales	Oriel Davies Gallery	Valley & Vale Community Arts Ltd.
Cwmni'r Frân Wen	Oriel Myrddin Trust	Valleys Kids
Dawns i Bawb	Peak	Volcano Theatre Company Ltd
Disability Arts Cymru	Pontardawe Arts Centre	Wales Millennium Centre
Ffotogallery	Pontio	Welsh National Opera
Ffilm Cymru Wales	Powys Dance	
g39	Rhondda Cynon Tâf Theatres	
Galeri Caernarfon Cyf	Rubicon Dance	
Glynn Vivian Art Gallery	Ruthin Craft Centre	
Hafren	Sherman Theatre	
Head4Arts	Sinfonia Cymru	
Hijinx Theatre	Taliesin Arts Centre	
Jukebox Collective	The Riverfront	
